

Koostu Toolbox-iga

Site: [TalTech Moodle](#)
Course: EVR0210 Raalprojekteerimine (CAD ja 3D)
Book: Koostu Toolbox-iga

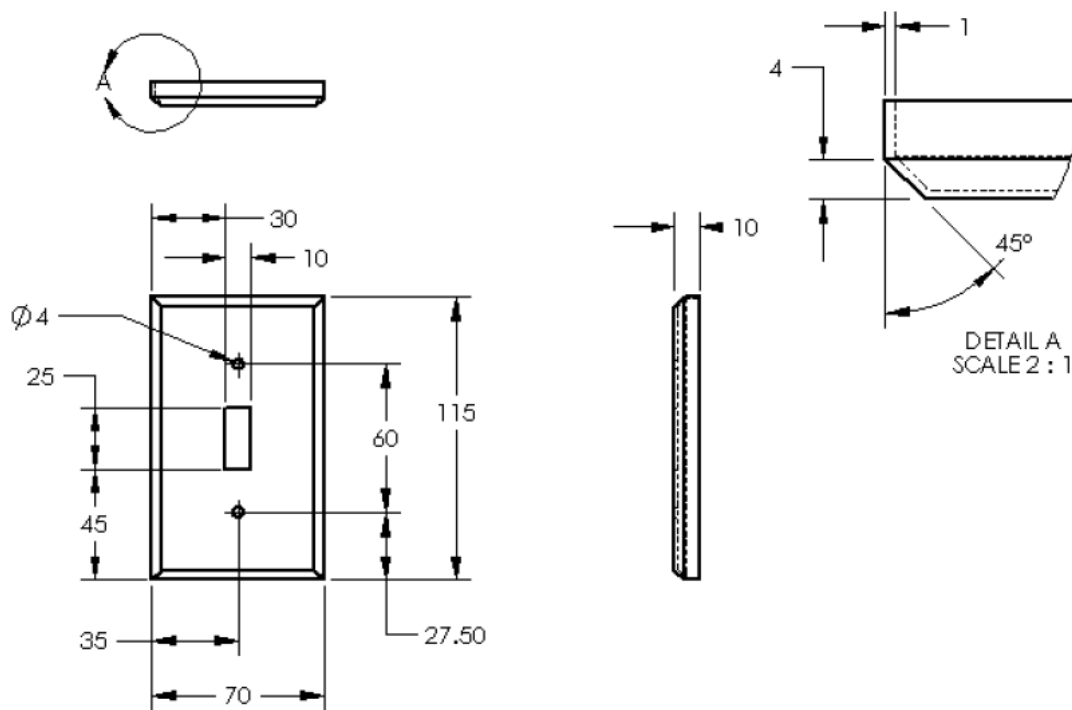
Printed by: Veronika Shirokova
Date: Wednesday, 22 February 2023, 11:31 AM

Table of contents

- [1. Switch plane joonestamine](#)
- [2. Toolbox-i käivitamine](#)
- [3. Koostu tegemine](#)

1. Switch plane joonestamine

Joonestada switch plate nagu on näidatud joonisel 1.



Tähtis on järjekord:

Esimene — konstrueeritakse element «switch plane baas».

Teine — Fillet/Chamber

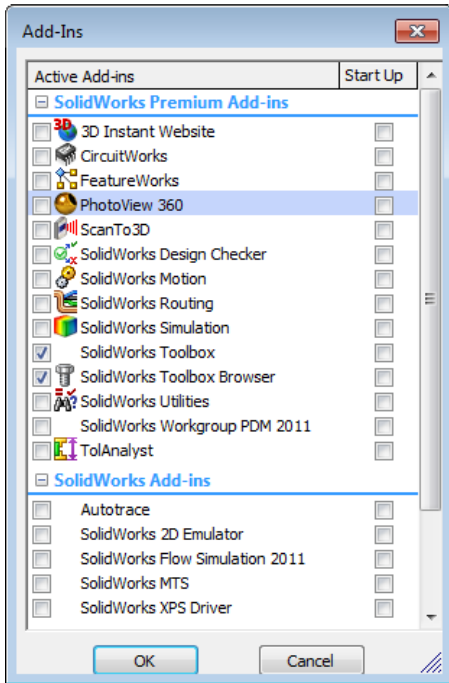
Kolmas — Shell

Neljas — konstrueeritakse ava kruvide jaoks

Viies — Extruded Cut

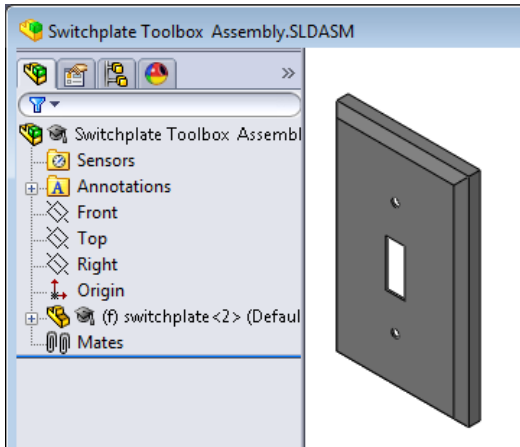
2. Toolbox-i käivitamine

Tools, Add-Ins - pange linnukesed nagu on näidatud joonisel.

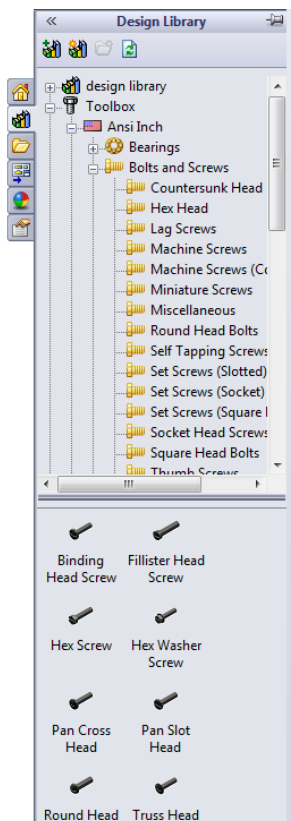


3. Koostu tegemine

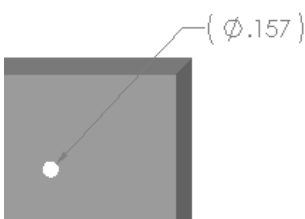
Tehke lahti **Switchplate Toolbox Assembly**. Antud koostu sisaldab ainult 1 elemendi. Tehke Toolbox lahti.



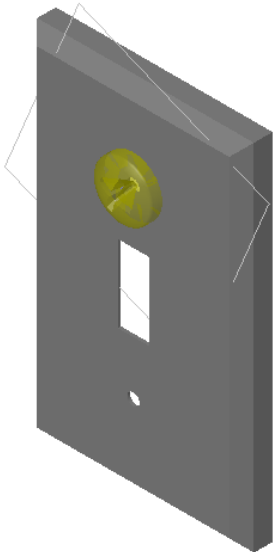
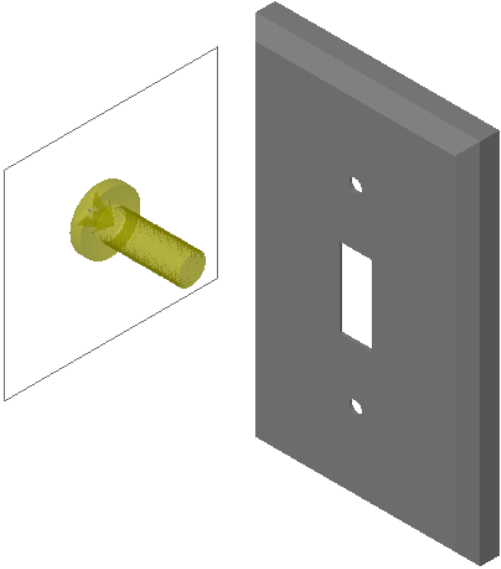
Tehke Toolbox lahti.



Valides **Smart Dimension** mõõtku uuesti avad kruvide jaoks.



Funktsioonis **Toolbox** valige **ANSI Inch** (ANSI tollides), edasi **Bolts and Screws**, edasi **Machine Screws**. Valige **Pan Cross Head**.



Tehke vajalikud häälestused vasakpoolses menüüs tulbas.

Pan Cross Head ?

✓ ✗

Favorites ^

✦ ✧

List by Part Number
 List by Description

▼

Description:

Properties ^

Size:
#6-32 ▼

Length:
1 ▼

Drive Type: Cross

Thread Length:
1 ▼

Diameter: 0.138

Configuration Name:
CR-PHMS 0.138-32x1x1-N

Comment:
▼

Thread Display:
Simplified ▼

Options ^

Auto size to mated geometry